

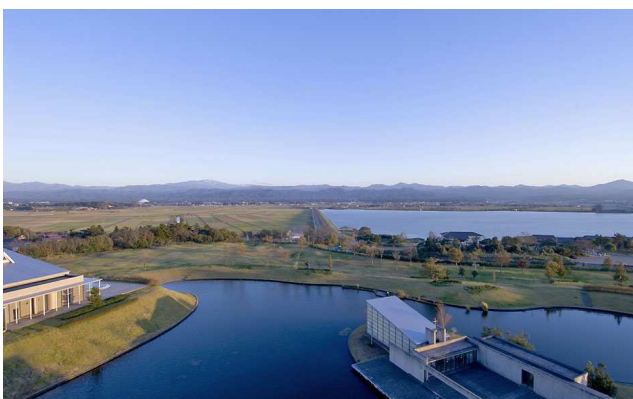
The Hotel: “HOTEL Arrowle” (ホテル アローレ)

Location: To 5-1, Shibayama-machi, Kaga City, Ishikawa. Japan, 922-0402

(HP): <http://www.arrowle.co.jp/>

(English): http://www.arrowle.co.jp/e_html/

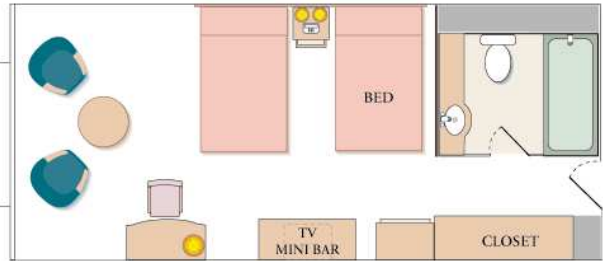
(Chinese): http://www.arrowle.co.jp/c_html/



Rooms --- All rooms are Western-style rooms.

All rooms have a TV, bathrobes, shampoo, conditioner, toothbrushes, slippers, a hair dryer, and so on.

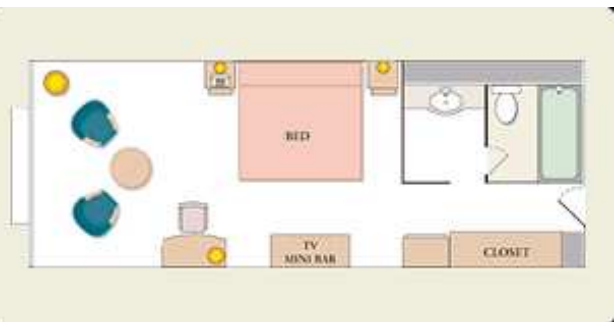
● **STANDARD**



Max. 2 people in a room
Bed Size: 1220mmx1950mm

This room is also available for solitary guests.

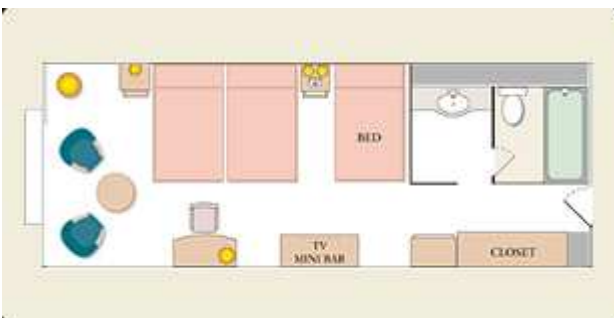
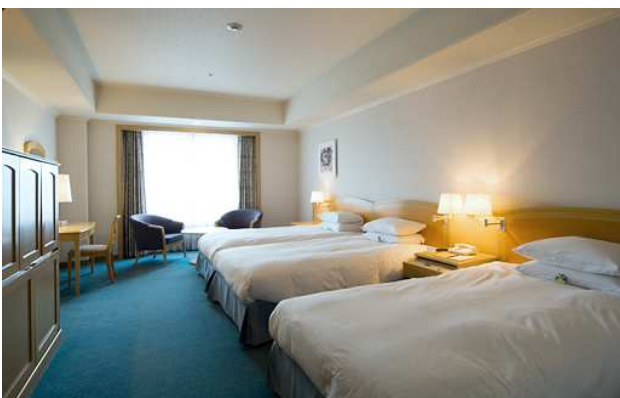
● **DOUBLE**



Max. 2 people in a room
Bed Size: 1800mmx2070mm

This room is also available for solidary guests.

● **TRIPLE**



Max. 4 people in a room
Bed Size: 1100mmx1950mm

When you stay in this room for 4 people, an extra bed is added.

Room Rate (per person / night) ※ONLY Nov. 9-10th, 10-11st, 12-13rd

Rooms	Rate (per person)
For 1 person	9,850 yen
For 2-4 people	7,850 yen

- **The above rate includes breakfast and dinner.**
- Nov. 13-14th, the room rate rise by 2,000 yen. Also, when you stay in this hotel on earlier or later these days, the rate may change.
- We accept your rooming request, but this doesn't mean that it is completely reflected. Depending on visitors, it might be decided by us.

Meals

- You can eat breakfast, lunch and dinner at the restaurant in this hotel.
(Around the hotel, there is not any restaurant.)



Other Facilities

● Souvenir Shop (Souvenir Shop Local Products “SCIBETTA”)

You can buy various kinds of souvenirs, which are the products made around the hotel.



● Exhibit

You can see some traditional products, and you can also buy some of them.



● Natural Bath “KAGA”



● Beauty Salon (Esthetic Salon “EPICA”)



● Pool & Spa “AQUA 9”



● Tennis Courts



● Park Golf Area



● Table Tennis Room



● Karaoke Room



● Mahjong Room

